

5.25SH



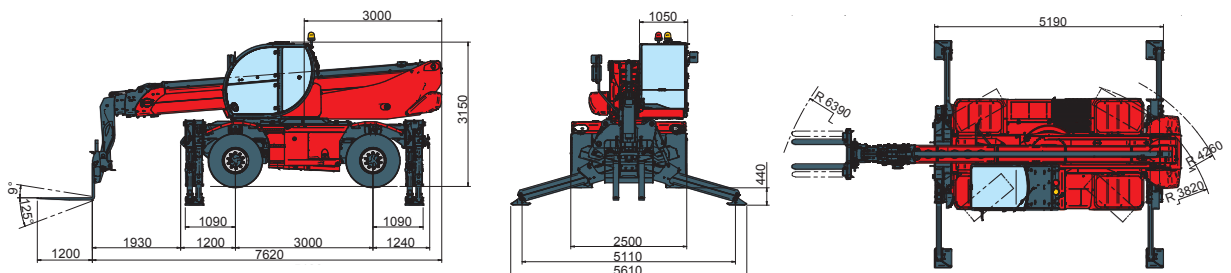
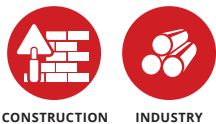
Maximum lifting height: 25.00 m
Maximum reach: 21.20 m
Electronically controlled hydrostatic transmission
Automatic levelling device
Scissors stabilizers

RTH 5.25 SH

MACHINE MODEL	Rotary telescopic handler	RTH 5.25 SH	
	Maximum lifting capacity	4,999 kg (center of gravity 500 mm)	
	Maximum lifting height	25,00 m	
	Rotation	360° (continuous)	
ENGINE	Type	Deutz TCD 3.6 L4 - stage IV	Deutz TCD 3.6 L4 EDG - stage III A compliant
	Rated Power	100 kW - 134 hp @ 2,200 rpm	100 kW - 134 hp a 2,200 rpm
	Maximum torque	500 Nm @ 1,600 rpm	500 Nm @ 1,600 rpm
	Displacement	3,6 l	3,6 l
	Cylinders	4 in line	4 in line
	Fuel	Turbocharged direct injection diesel	Turbocharged direct injection diesel
	Cooling System	Water – intercooler	Water – intercooler
TRANSMISSION	Type	Hydrostatic	
	Model	Bosch – Rexroth	
	Maximum pressure	500 bar	
	Displacement	Electronically controlled variable displacement pump Variable displacement motor	
	Gearbox	Dropbox, 2 speeds forward-reverse	
AXLES AND BRAKES	Type	Axles with planetary gearboxes	
	Rear axle	Steering	
	Front axle	Oscillating and steering with automatic levelling, +/-10°	
	Service brake	Hydraulically operated wet multi-disk brakes on each axle	
	Parking brake	Hydraulic with negative action	
	Tyre sizes	445/65 R 22,5	
PERFORMANCE	Max. travel speed	40 km/h	
	Drawbar pull	66 kN	
	Gradeability	41%	
	Turning circle (at forks)	6,390 mm	
WEIGHTS	Total unladen	18,000 kg	
	Front axle unladen (boom retracted and lowered)	8,100 kg	
	Rear axle unladen (boom retracted and lowered)	9,900 kg	
TANK AND SYSTEM CAPACITIES	Diesel fuel tank	180 l	180 l
	AdBlue	10 l	n.a.
	Hydraulic fluid	190 l	190 l
	Engine oil	8 l	8 l
	Coolant	23 l	23 l
HYDRAULIC CIRCUIT FOR MOVEMENTS	Max. working pressure	350 bar	
	Circuit type	Load sensing	
	Service pump	Bosch Rexroth – Variable displacement	
	Distributor for boom and turret movements	Danfoss – SIL 2 electro-proportional valve	
	Distributor for stabilisers	Bosch Rexroth – Electro-hydraulic actuators	
	Movements control	2 no. two-axis Danfoss joysticks with deadman safety device Managed via CAN bus	
CONFORMTY TO STANDARDS	EN 13849: concerning the safety of all controls of the machine EN 13000: concerning the standard of hydraulic cranes EN 280: concerning the standard of aerial platforms FOPS/ROPS 97/68/CE: concerning engine emissions standards EN1459-2		

The data in this brochure are informative and subject to change without notice

MAIN SECTORS

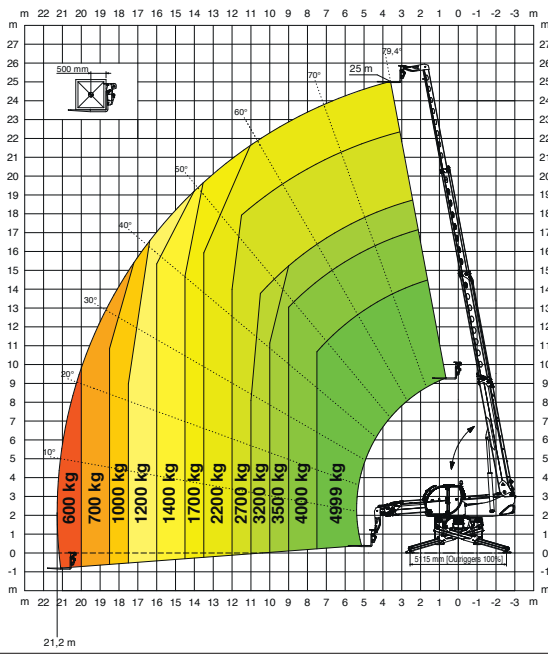


Magni Telescopic Handlers srl

Via Magellano, 22 - 41013 Castelfranco Emilia, Modena, Italia - Tel: +39 059 8630811 - Fax: +39 059 8638012
commerciale@magnith.com - www.magnith.com

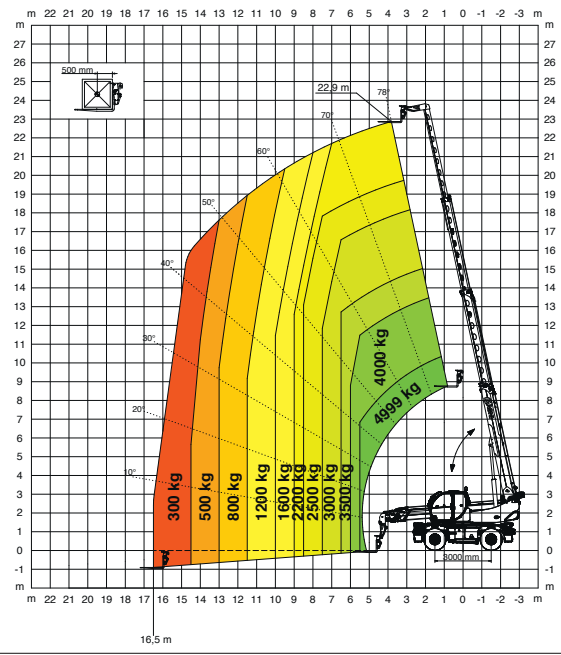
360° FULLY EXTENDED STABILIZERS
LOAD CHART WITH FORKS

ON STABILISERS



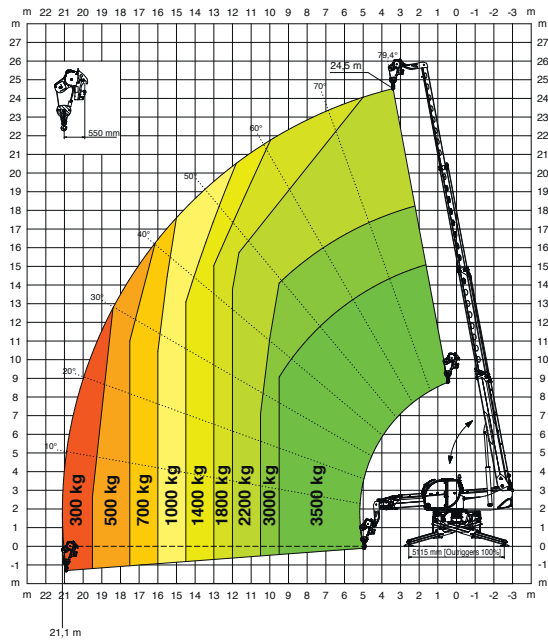
FRONTAL POSITION LOAD CHART
ON TYRES WITH FORKS

ON TYRES



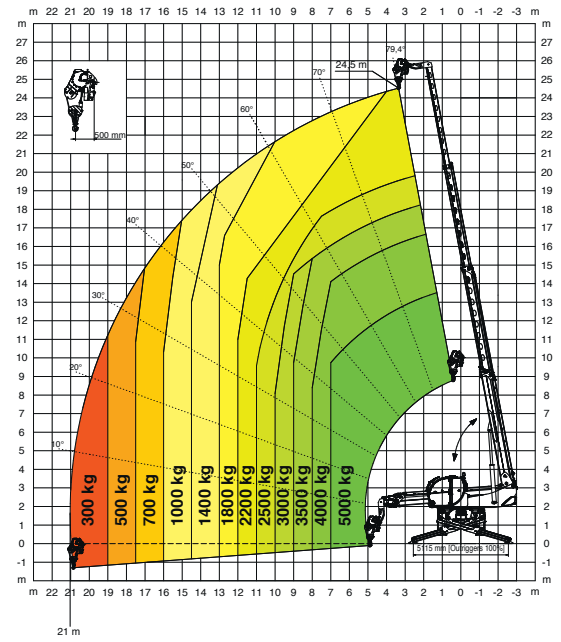
WINCH 3,500 kg

W 3,5



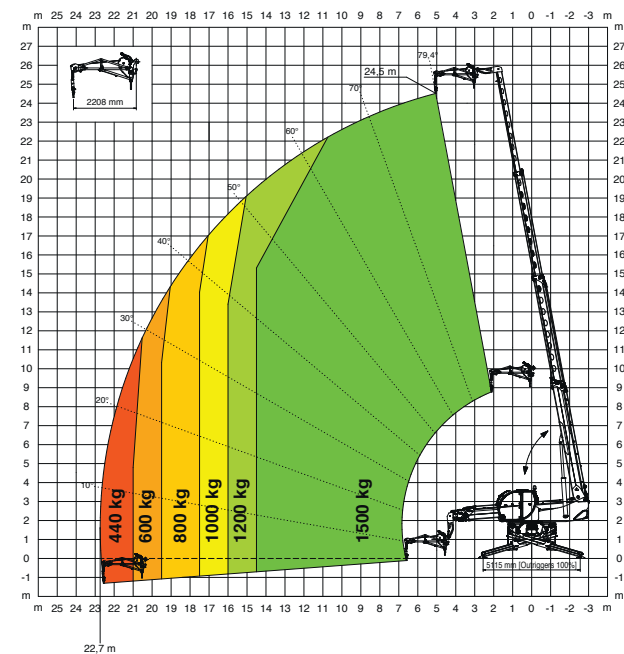
WINCH 5,000 kg

W 5



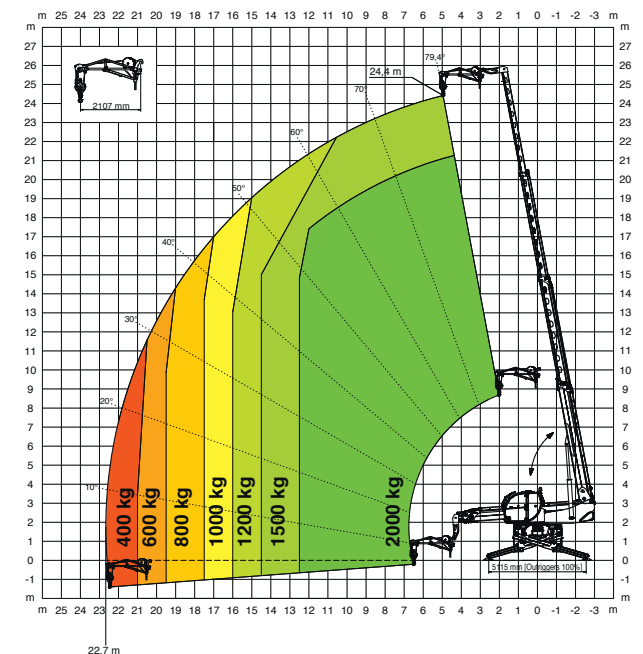
JIB WITH WINCH 1,500 kg

JW 1500



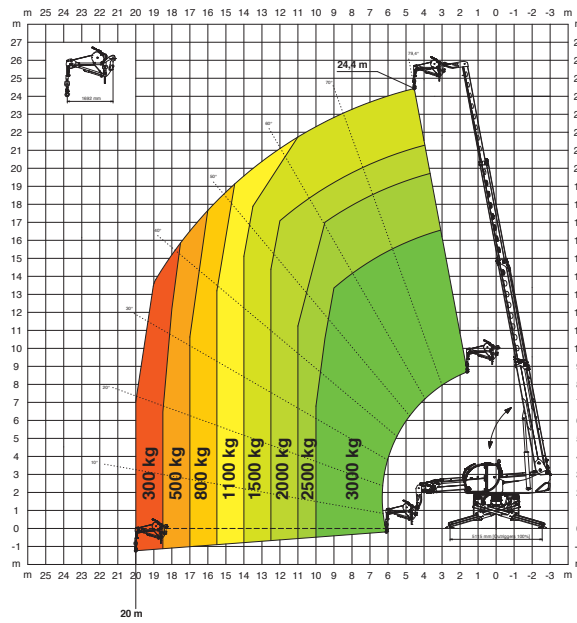
JIB WITH WINCH 2,000 kg

JW 2000



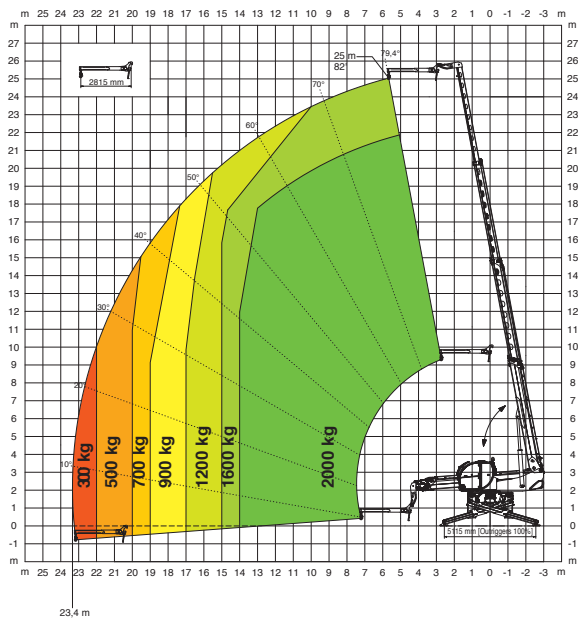
JIB WITH WINCH **3,000 kg**

JW 3000



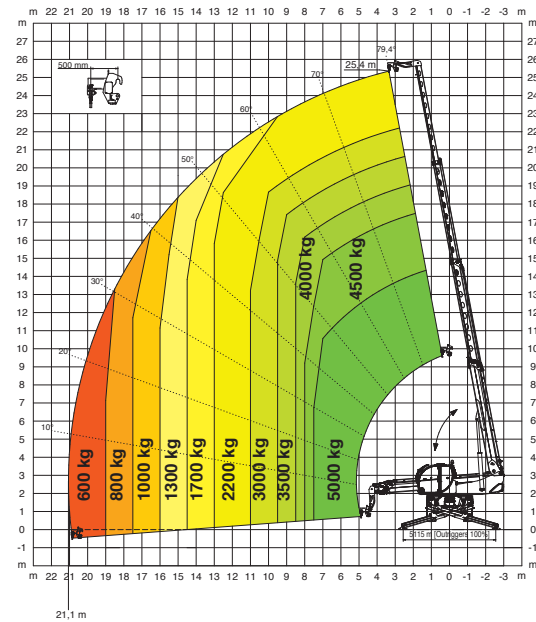
JIB **2,000 kg**

J 2000



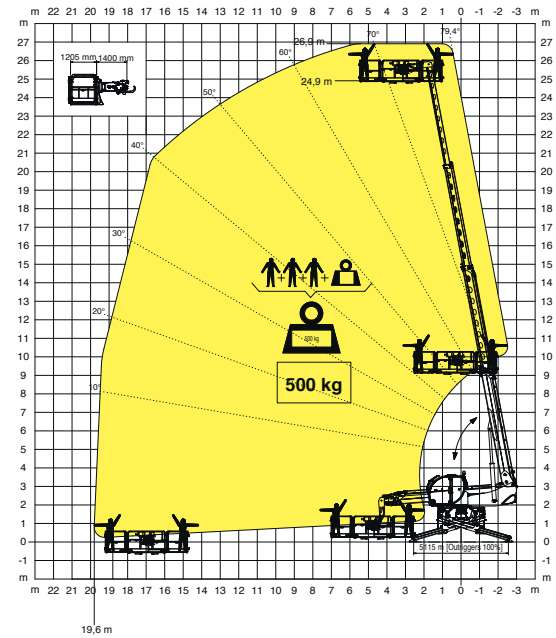
HOOK **5,000 kg**

H 5



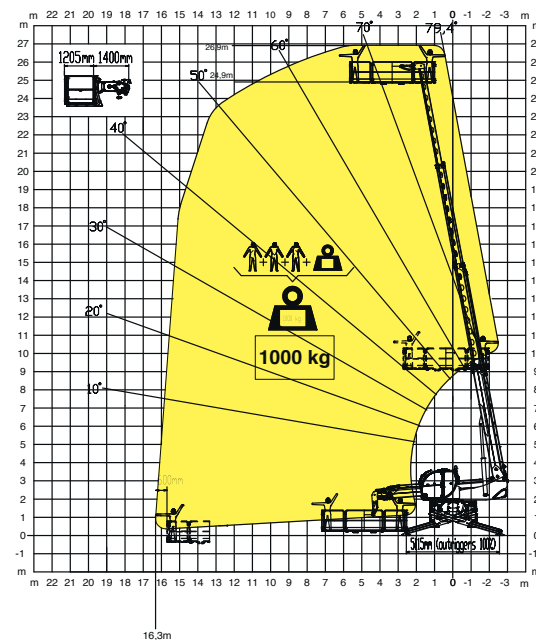
ROTATING EXTENDABLE BASKET **500 kg**

REP 2-4,5



ROTATING EXTENDABLE BASKET **1,000 kg**

REP 10.2-4,7



BASKET 4.7 m **800 kg** WITH WINCH **300 kg**

REP 8,2-4,7 W0,3

